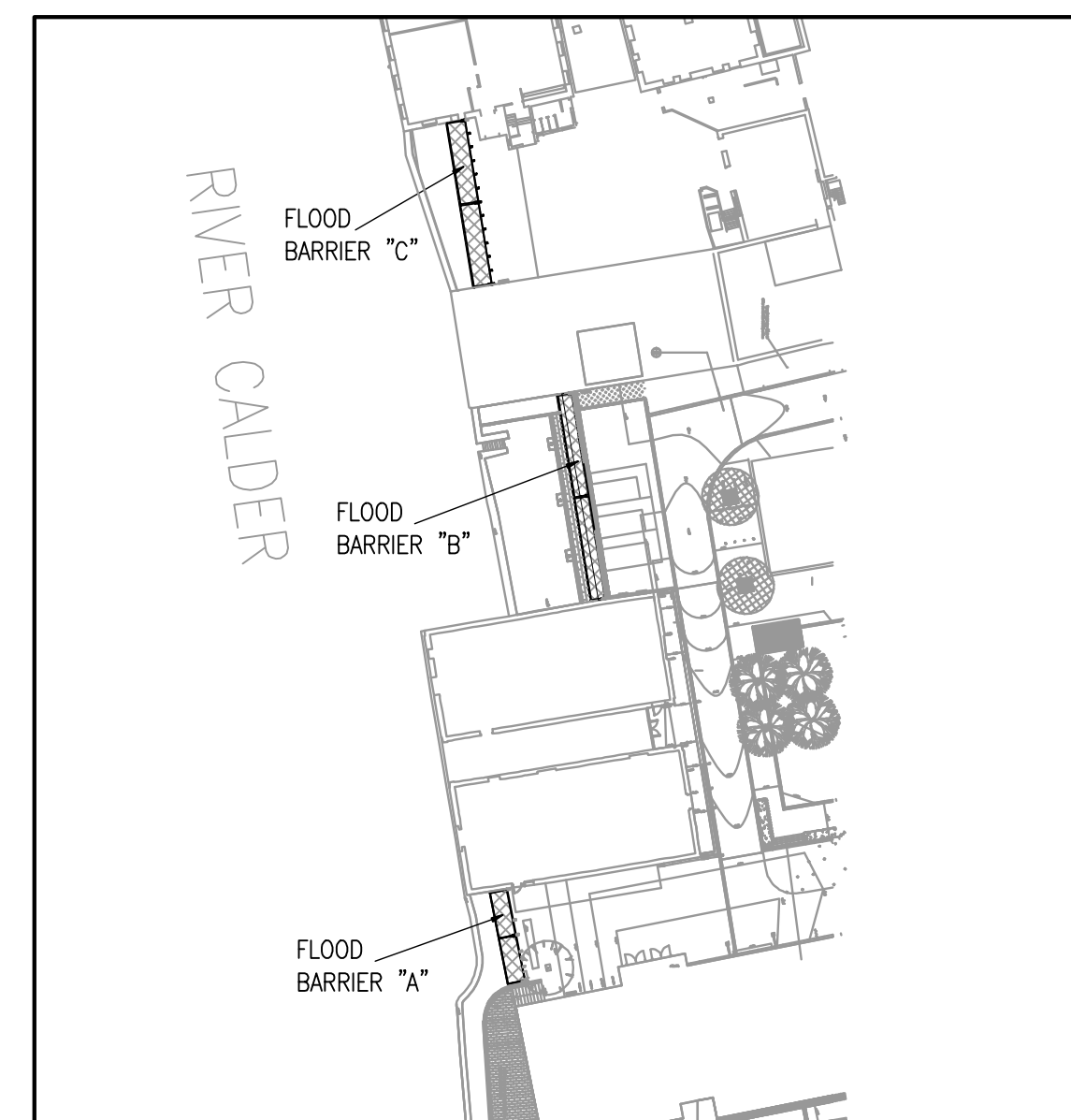
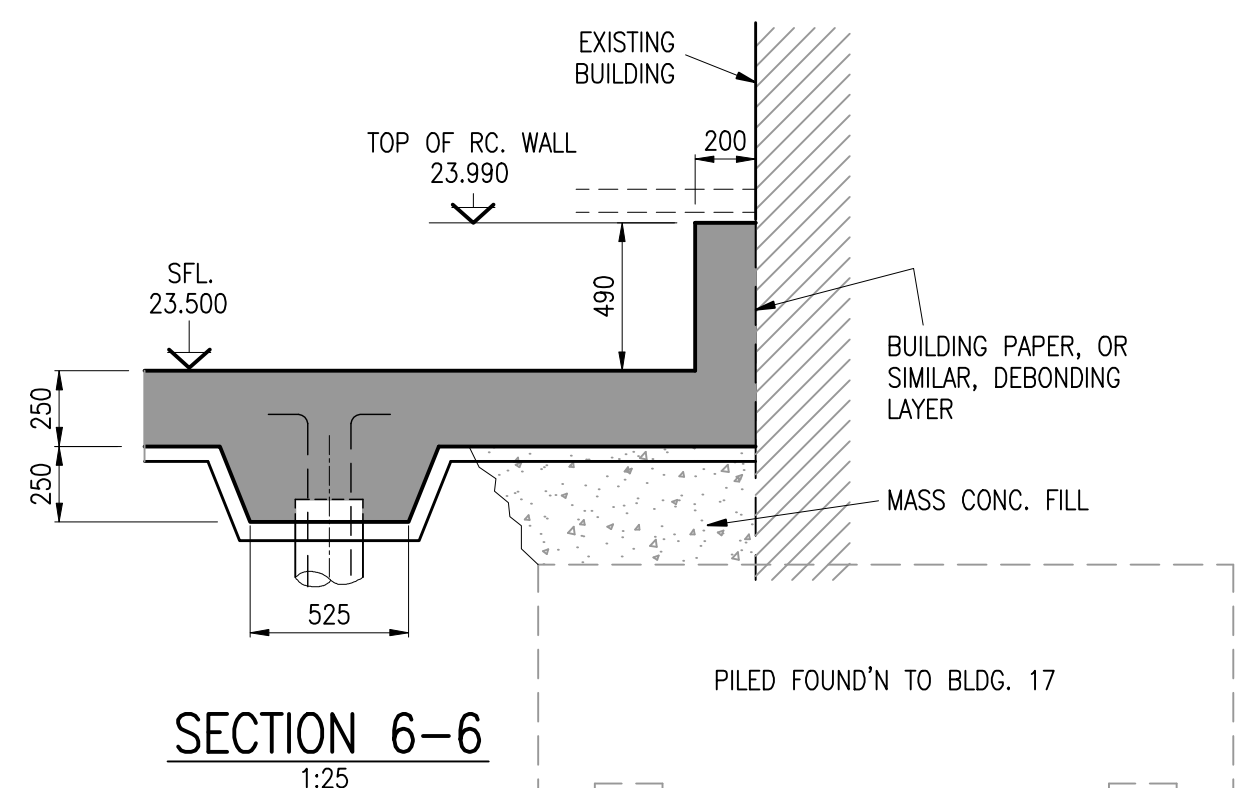
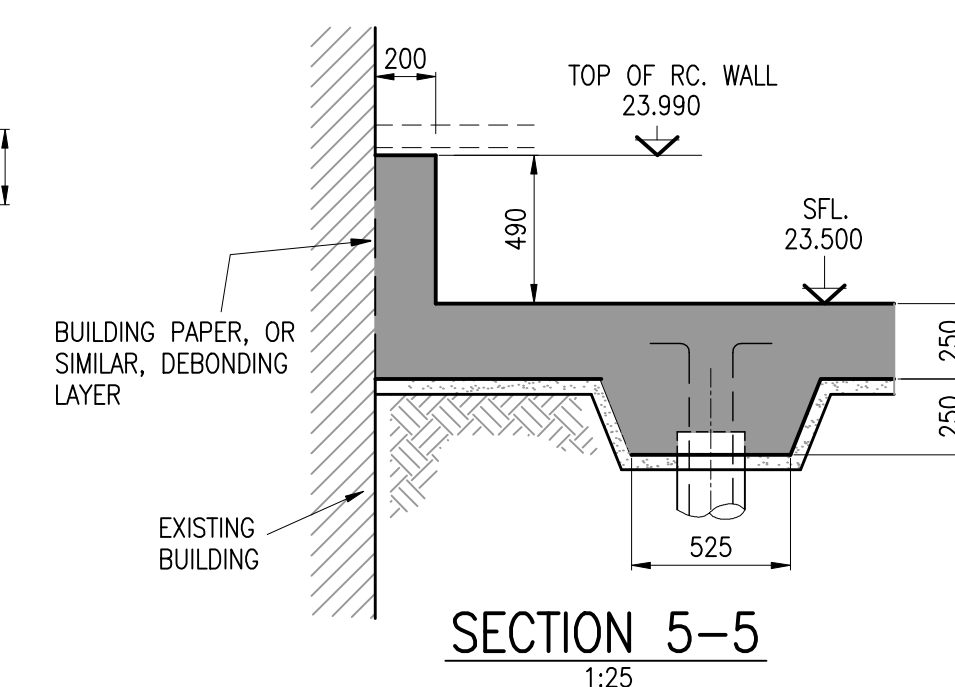
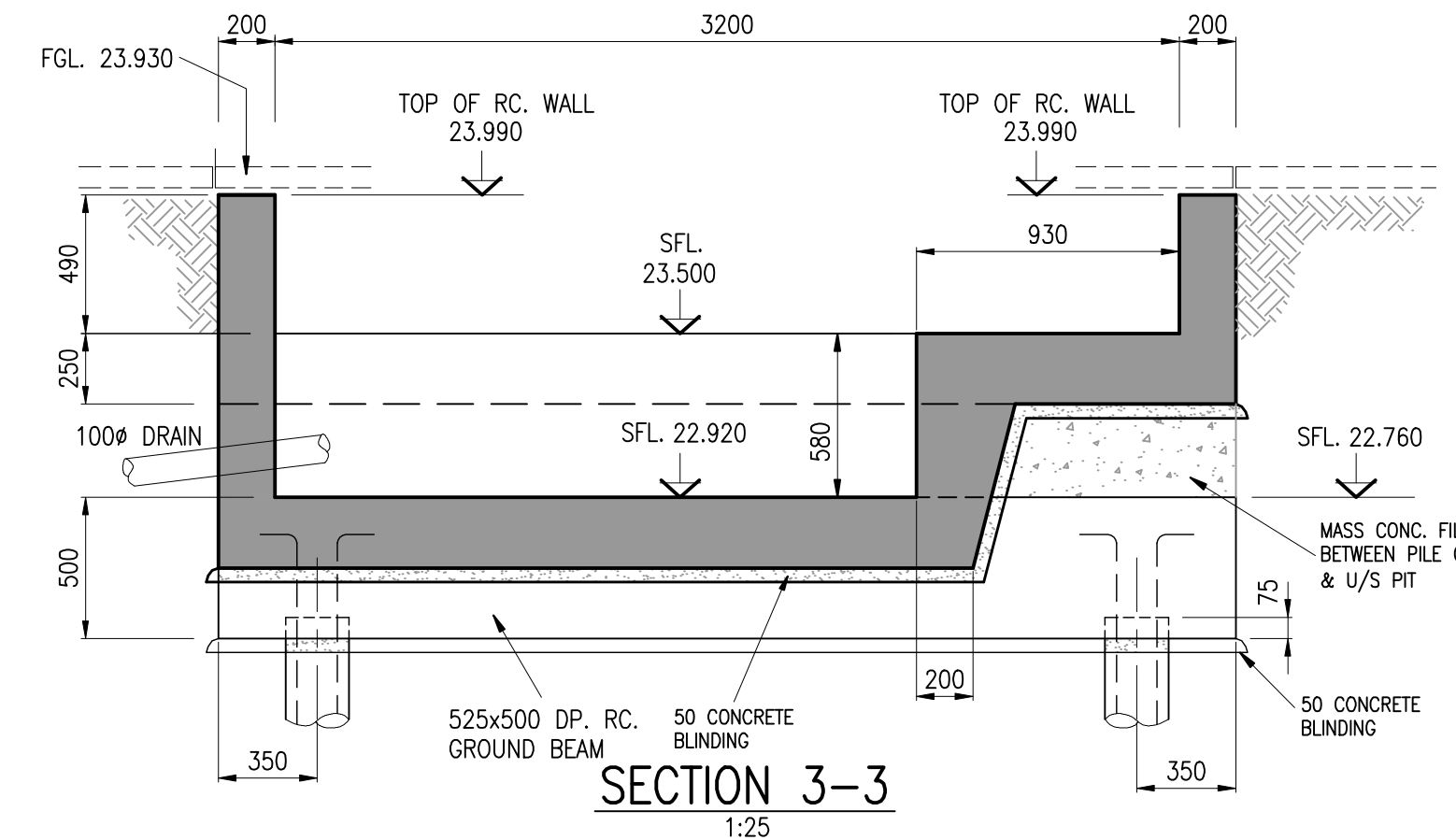
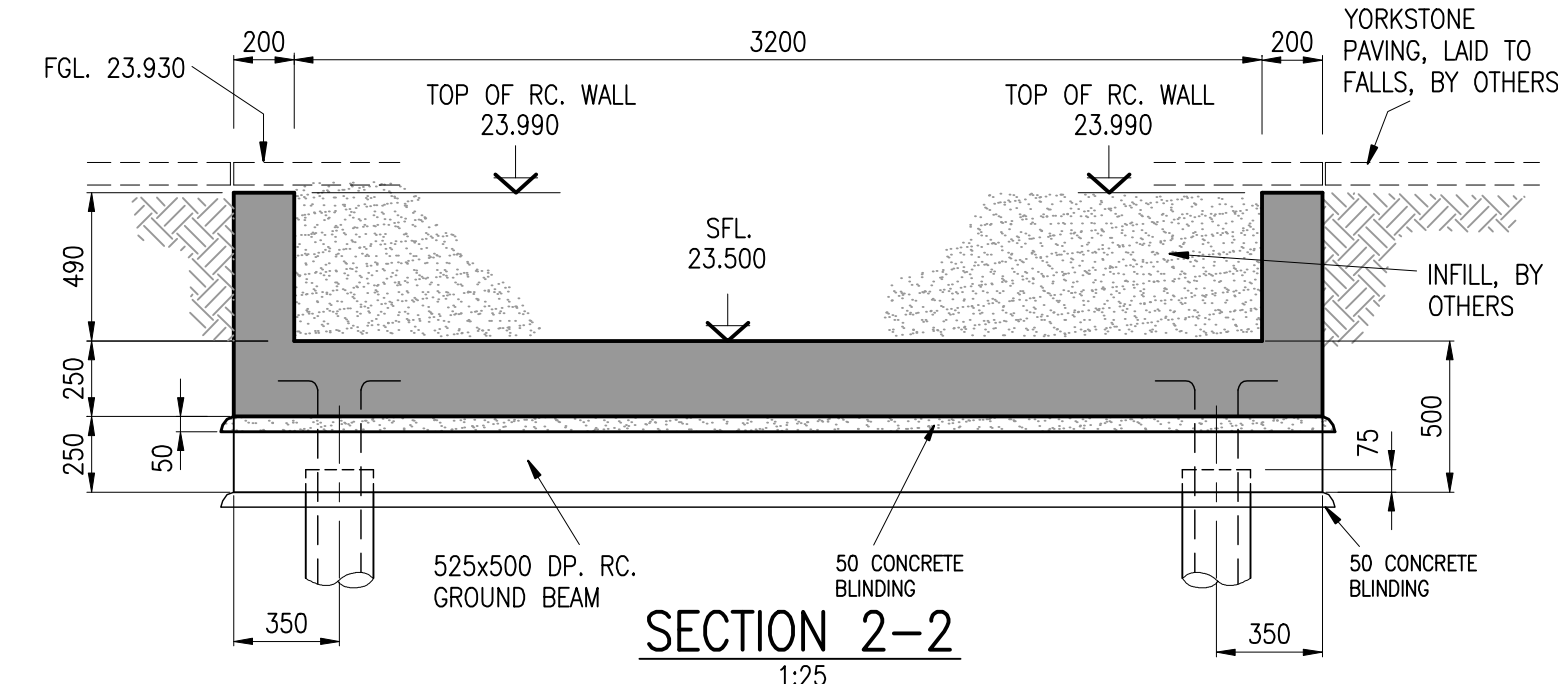


PILE SCHEDULE						
PILE No.	PILE LOADING (SERVICE)				CUT-OFF LEV. (m) (DATUM=FFL)	COMMENTS
	AXIAL (kN)		SHEAR (kN)	MOMENT (kNm)		
1	+120	-15	20	-	23.075	
2				-	23.075	
3				-	23.075	
4				-	23.075	
5				-	22.495	
6				-	22.495	
7				-	23.075	
8				-	23.075	
9				-	23.075	
10				-	23.075	
11				-	23.075	
12				-	23.075	
13				-	23.075	
14				-	23.075	
15				-	23.075	
16				-	23.075	
17				-	22.495	
18				-	22.495	
19				-	23.075	
20				-	23.075	
21				-	23.075	
22	✓	✓	✓	-	23.075	

NOTES.
ALL MATERIALS AND WORKMANSHIP TO COMPLY WITH SEJC CONSULTING ENGINEERS STANDARD SPECIFICATION FOR REINFORCED CONCRETE AND ALL RELEVANT BRITISH STANDARDS.
THIS DRAWING TO BE READ IN CONJUNCTION WITH ALL RELEVANT ARCHITECTS AND SEJC CONSULTING ENGINEERS DRAWINGS.
FOR DETAILS OF REINFORCEMENT REFER TO SEJC CONSULTING ENGINEERS DRAWING NUMBER 501180C/20-318
FOR DETAILS OF CONCRETE MIX REFER TO SEJC STANDARD CONCRETE SPECIFICATION.
ALL CONCRETE TO BE VIBRATED IN ACCORDANCE WITH SEJC CONSULTING ENGINEERS STANDARD SPECIFICATION FOR REINFORCED CONCRETE.
LOCAL SOFT SPOTS TO BE REPORTED TO SEJC CONSULTING ENGINEERS.
BLINDING CONCRETE TO BE C20.



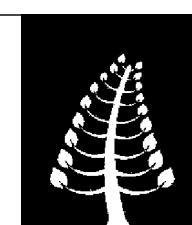
MK	REVISIONS	BY	DATE	
----	-----------	----	------	--

STATUS:-	
AS-BUILT	
DRAWN BY	SH
CHECKED BY	
PROJECT ENGINEER	
DATE	NOV. '07

CLIENT

CTP	St JAMES
-----	----------

PROJECT
WAKEFIELD WATERFRONT
BUILDING 20



SEJC Consulting Engineers
Consulting Structural & Civil Engineers

Sanderson House, Station Road, Horsforth, Leeds LS18 5JF
Telephone 0113 2590090 Fax 0113 2588640

TITLE
FLOOD BARRIER TYPE 'B'
FOUNDATION & PIT SET OUT

SCALES AS SHOWN

CONTRACT No	DRG No			
501180C	20-012			